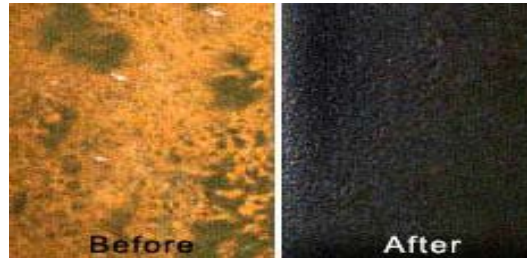




# CL 9100 RUST CONVERTER

---



**!!!!!!STOP RUST IMMEDIATELY WITH RUST CONVERTER!!!!!!**

## **PRODUCT DESCRIPTION**

**CL 9100 Rust Converter** is a unique corrosion control system for use on rusted ferrous metal surfaces. The ferrous surface to be protected is converted on contact to a complex organic iron compound by the unique deoxygenating agent incorporated in the **CL 9100 Rust Converter**. This black, corrosion-resistant layer is formed by utilizing all the surface moisture and oxygen during the reduction reaction. The special copolymer latex emulsion system dries to form an impermeable barrier to oxygen and moisture.

**CL 9100 Rust Converter** products are associated with the protection of marine and ship building, offshore oil platforms, refineries, chemical plants, pipelines, mining and power stations. Yet its potential is far greater. **CL 9100 Rust Converter** coating systems exist to protect any paintable surface in virtually all environments and even at low temperatures.

**CL 9100 Rust Converter** is high performance rust coatings last longer than ordinary decorative paints. Their special formulations can reduce initial maintenance costs by using fewer coats yet extending painting cycles, and with their exceptionally rapid drying time, the recommended curing time is 8 hours. The Coverage area for 1 Liter can be cover up to 100 Sqft.

This Product can be applied to bright or shot blasted metal, galvanised or metal-sprayed structural steel and plant, concrete floors and walls and the footings of super-structures.

**CL 9100 Rust Converter** is high performance rust coatings are distinguished from normal paints by their ability to provide long-term protection and high performance under an infinite variety of aggressive conditions: acid rain, salt water, acid chemicals, desert sand, industrial effluents, etc.

**CL 9100 Rust Converter** with high technology gives enhanced life to plant and buildings - it reduces the costs and extent of corrosion.

**ONE STOP MAINTENANCE PARTNER**